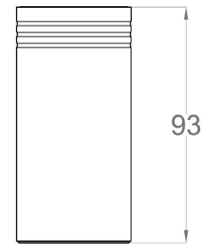
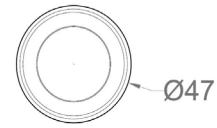


Tono N

Surface Lighting | IP40 | Class III | Dimmable



LIGHT SOURCE & OPTIC

Power

3W
6W
9W

Lens

3°
10°
30°
50°

Beam Direction

Fixed, Symmetrical

Material

PMMA

LED quantity

1

Binning

2 MacAdam step

Color temperature & quality

2700K CRI>90
3000K CRI>80/90
3500K CRI>80
4000K CRI>80

Lifetime

(L90) >60.000 hrs

FIXTURE

Dimensions

Ø 47mm x H 93mm

Material

Aluminium

Body finishes

Black
Titanium
Gray
White (RAL 9003)

Weight

170gr

Mounting

On surface

Fixing

Screws

Working temperature

-20° / +40°

ELECTRICAL FEATURES

Power supply

Constant current:
900mA
500 mA
700mA
Typical Vf= 3V (3W)
Typical Vf= 12V (6/9W)

Driver requirement

Remote (not included)

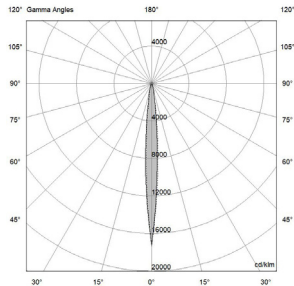
Control

On/off
Push switch
Phase Cut
0/1-10 V
Casambi
DALI

Tono N

PHOTOMETRIC DATA (3000K CRI>80)

3W - 3° | UGR 9

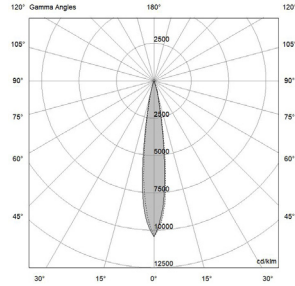


| H (m) | D (m) | Eav (lx) |
|----------|----------|-------------|
| 1 | 0.14 | 1925 |
| 2 | 0.29 | 481 |
| 3 | 0.43 | 214 |
| 4 | 0.58 | 120 |
| 5 | 0.72 | 77 |

Total lumen output
183 lm

Efficacy
61 lm/W

6W - 10° | UGR 8

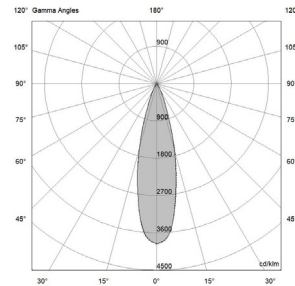


| H (m) | D (m) | Eav (lx) |
|----------|----------|-------------|
| 1 | 0.28 | 3616 |
| 2 | 0.55 | 904 |
| 3 | 0.83 | 402 |
| 4 | 1.10 | 226 |
| 5 | 1.38 | 145 |

Total lumen output
543 lm

Efficacy
91 lm/W

6W - 30° | UGR 12

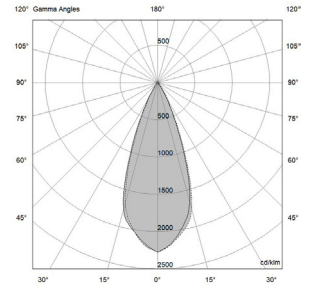


| H (m) | D (m) | Eav (lx) |
|----------|----------|-------------|
| 1 | 0.48 | 1217 |
| 2 | 0.96 | 304 |
| 3 | 1.44 | 135 |
| 4 | 1.92 | 76 |
| 5 | 2.40 | 49 |

Total lumen output
505 lm

Efficacy
84 lm/W

6W - 50° | UGR 14

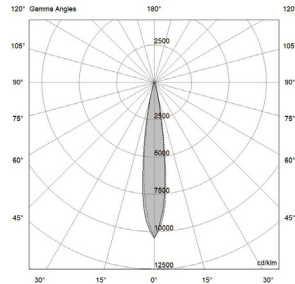


| H (m) | D (m) | Eav (lx) |
|----------|----------|-------------|
| 1 | 0.71 | 669 |
| 2 | 1.43 | 167 |
| 3 | 2.14 | 74 |
| 4 | 2.85 | 42 |
| 5 | 3.57 | 27 |

Total lumen output
483 lm

Efficacy
80 lm/W

9W - 10° | UGR 9

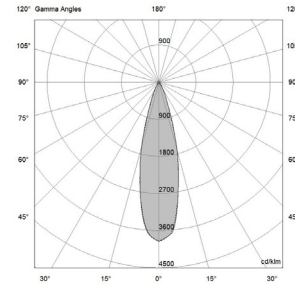


| H (m) | D (m) | Eav (lx) |
|----------|----------|-------------|
| 1 | 0.28 | 4702 |
| 2 | 0.55 | 1175 |
| 3 | 0.83 | 522 |
| 4 | 1.11 | 294 |
| 5 | 1.38 | 188 |

Total lumen output
707 lm

Efficacy
79 lm/W

9W - 30° | UGR 13

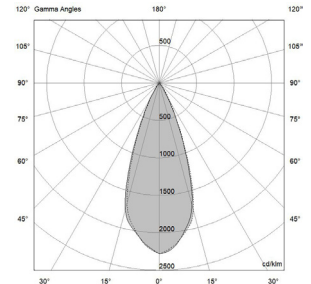


| H (m) | D (m) | Eav (lx) |
|----------|----------|-------------|
| 1 | 0.48 | 1591 |
| 2 | 0.97 | 398 |
| 3 | 1.45 | 177 |
| 4 | 1.93 | 99 |
| 5 | 2.42 | 64 |

Total lumen output
663 lm

Efficacy
74 lm/W

9W - 50° | UGR 15



| H (m) | D (m) | Eav (lx) |
|----------|----------|-------------|
| 1 | 0.72 | 875 |
| 2 | 1.44 | 219 |
| 3 | 2.16 | 97 |
| 4 | 2.88 | 55 |
| 5 | 3.60 | 35 |

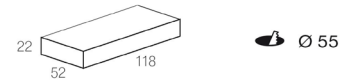
Total lumen output
634 lm

Efficacy
70 lm/W

SUGGESTED REMOTE DRIVERS

On/Off :

CC20-F-500/700/900-N

**Multifunction (DALI 2, 0/1-10V, PUSH RIPPLE FREE, AM DIMMING):**

CC25-DM-500/700/900-N



Other options upon request